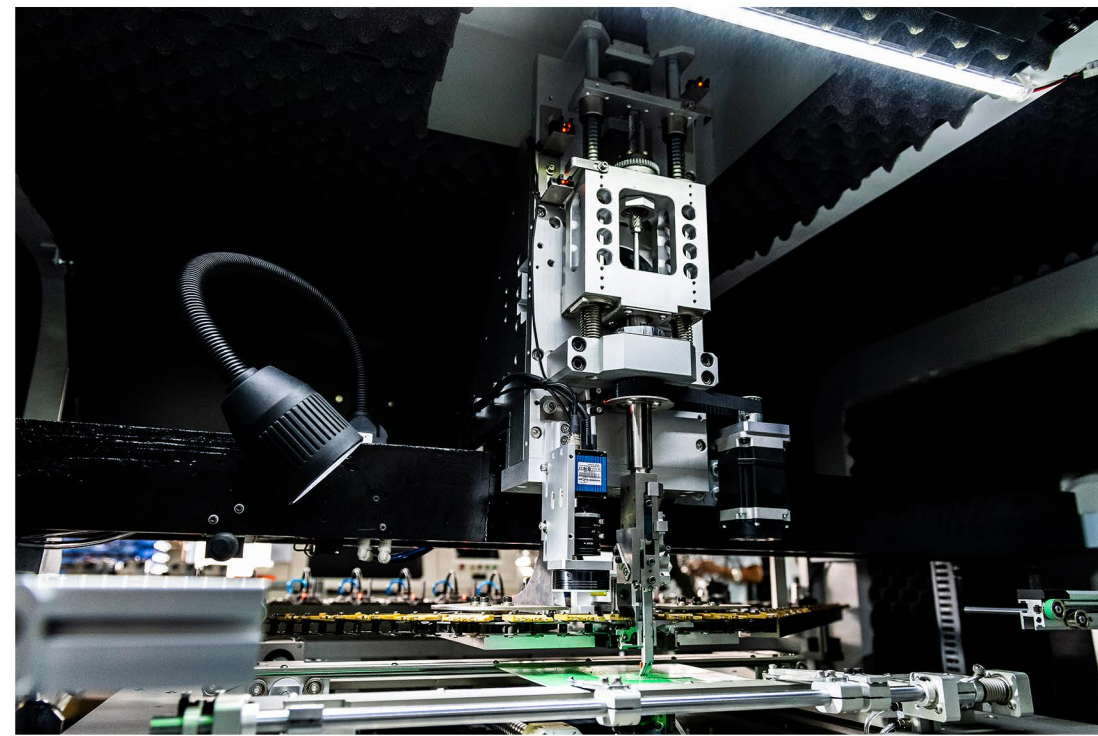


S3010A
Radial Inserter

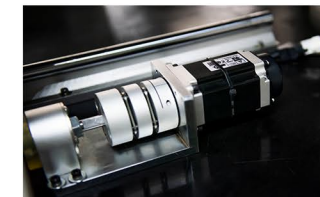


The S3010A brings a new level of productivity to radial component sequencing and insertion, offering consistently high throughput regardless of component type.

- high real throughput (12000 CPH)
- World-class reliability (1000 ppm)
- Manual Load or Automatic PCB Load/Unload
- Multiple clinch options with programmable height to avoid damaging SM components
- Scalable production – 10 to 100 inputs, (In-Line or Straight-Back)
- Single, dual, triple, and quad-span tooling
- Full range of insertion spans from 2.5mm to 10.0mm, including 3.5mm
- Widest component range – up to 22mm tall with no derate
- Component value and polarity verification prior to insertion
- Intuitive, graphical operator environment



1.5 KW head-driven motor



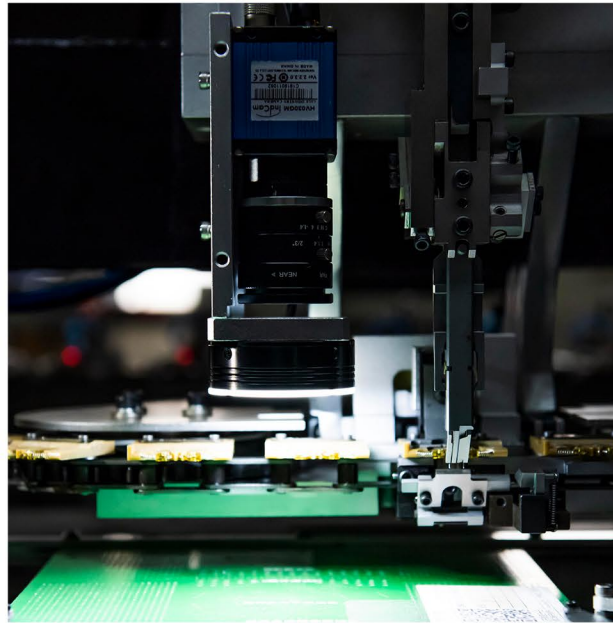
400W X-Y table motor



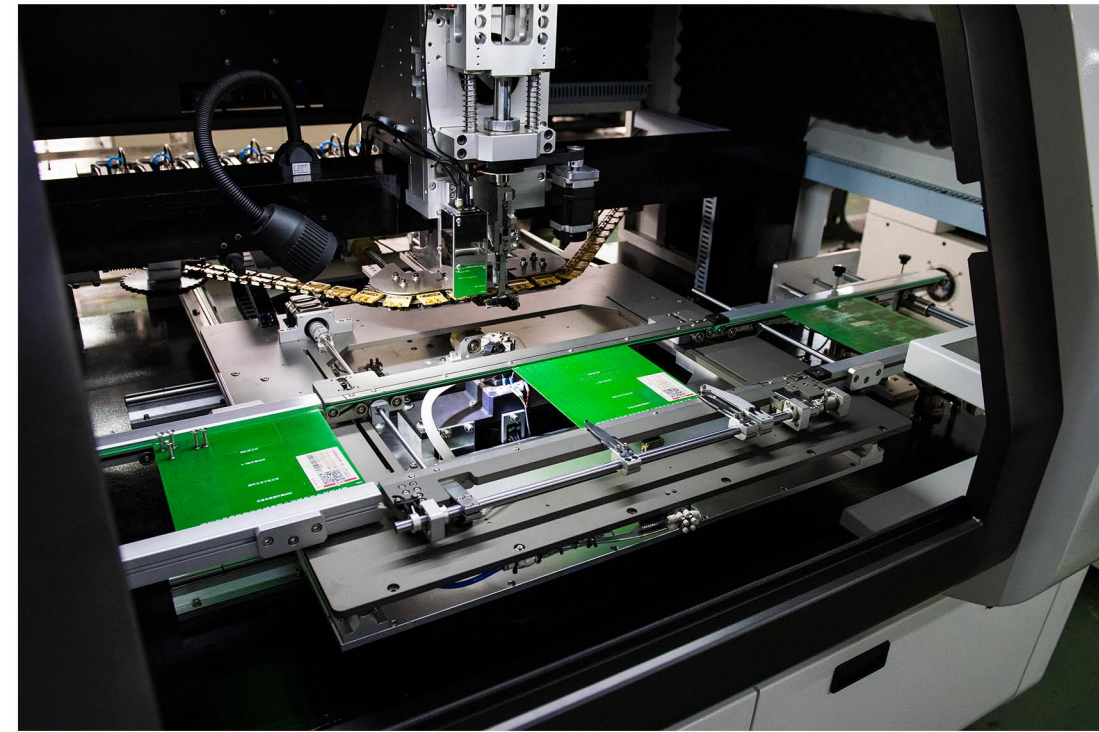
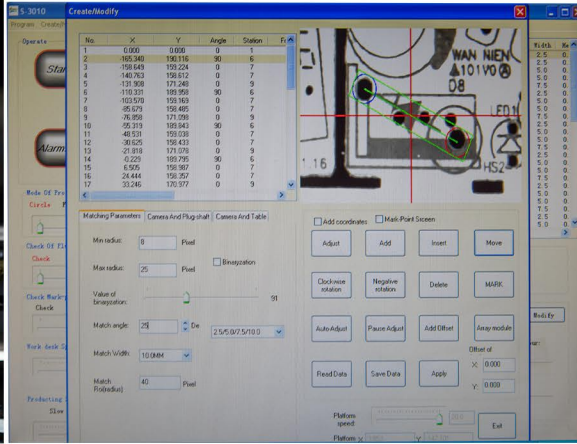
Full servo system

Full Fuji Servo Drive System bring high throughput (12000 CPH)and reliability (1000ppm)

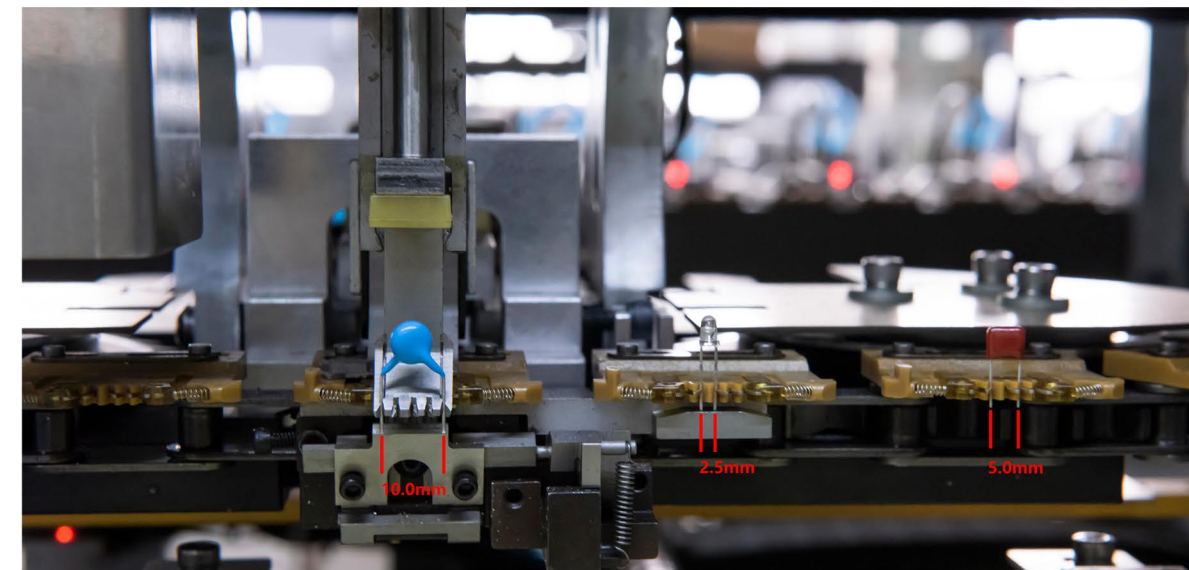
The expert of through-hole automation



camera visual operating system makes programming faster, the operator can finish a new PCB insertion program within 5 minutes

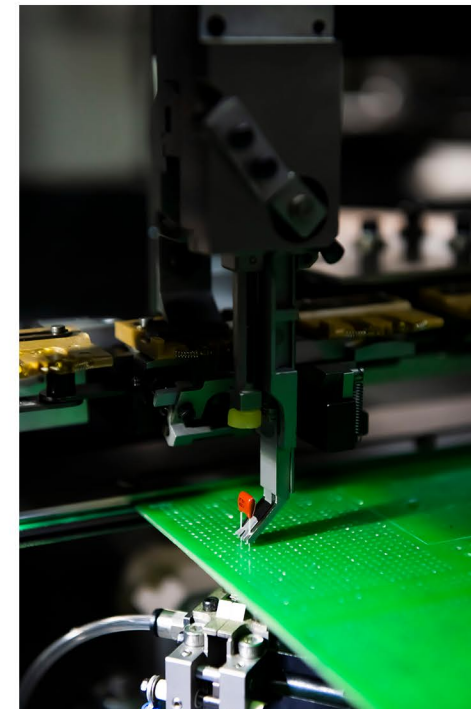


Auto PCB loading and unloading, MAX PCB size support : 400*400mm

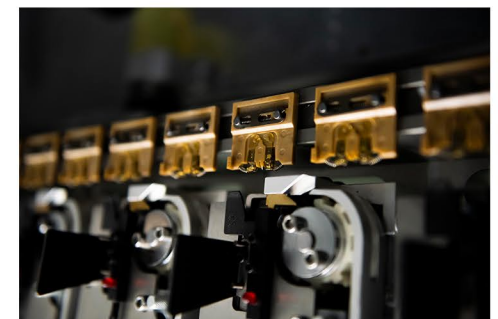


Quad-span support (optional) :

2.5/5.0/7.5/10.0 mm span component can be insert at the same time



Compatible with UIC parts:
insertion head , clinch base , CTA carriers, feeders



Application:



LED Signage / LED Illumination

LED Drivers / Fluorescent Ballasts

Set-top Box / Game / Motherboard

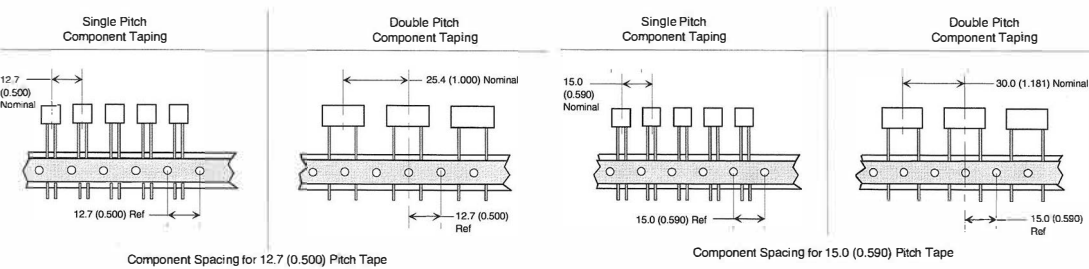
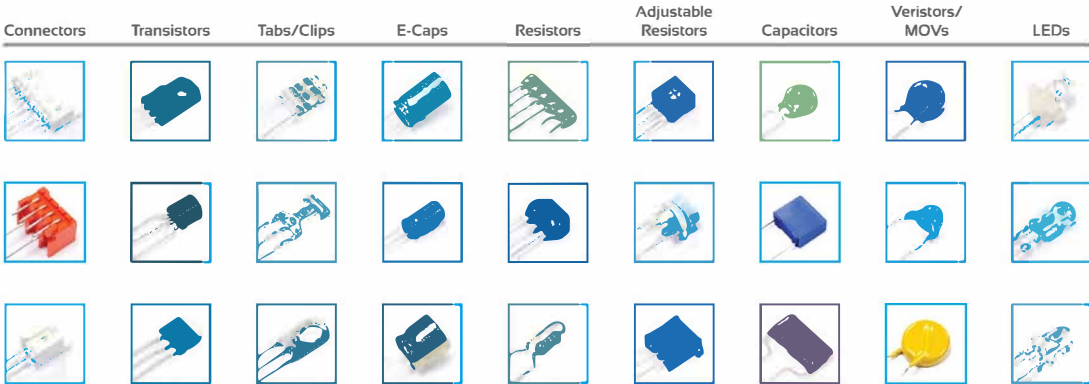


Appliance (White Goods)

Power Conversion

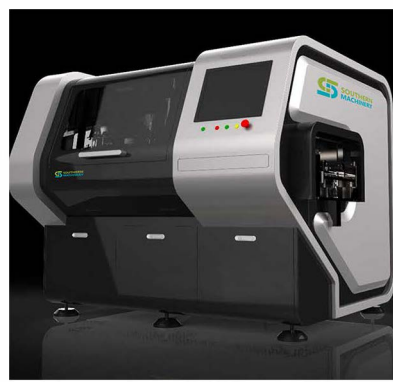
High-Mix Environments

Insert a full array of radial lead components in tape-package:



Machine specification

S-3010A	Radial insertion machine
	1) Triple span 2.5/5.0mm
	2) 12000 CPH, actual speed 10000 CPH
	3) Insert direction: 0° -360°, 1° increment
	4) Servo motor driven insertion head (13.0mm, 22mm tall) and clinch base "N" type. -
	5) Components available: Capacitor, Transistor, LED lights, Key Switch, standard tape packed radial leads components
	6) Core Machine Size (LxWxH) 1800x1600x1800mm,
	7) Machine Weight: 1000KG -
	8) Power supply: 220V, AC (single phase) 50/60 HZ -
	9) Air pressure: 0.6MPa; 0.3M ³ /MIN -
	10) Circumstance temperature: 10° C. to 35° C. -
	11) PCB Size: (Min) 50 mm x 50mm, (Max) 400mm x 400mm -
	12) PCB thickness: 0.79-2.36MM -
	13) Clinch Length: 1.5-2.2MM -
	14) Clinch degree: 10-35 degree -
	15) Coordinate correction: Machine vision systems -
	16) Non rotary table -
	17) Machine vision calibration systems -
	18) Control System: English or Chinese version interface -
	19) Southern Machinery platform software -
	20) LCD monitor -
	21) Industrial-control computer -
22) 10 Feeder -	

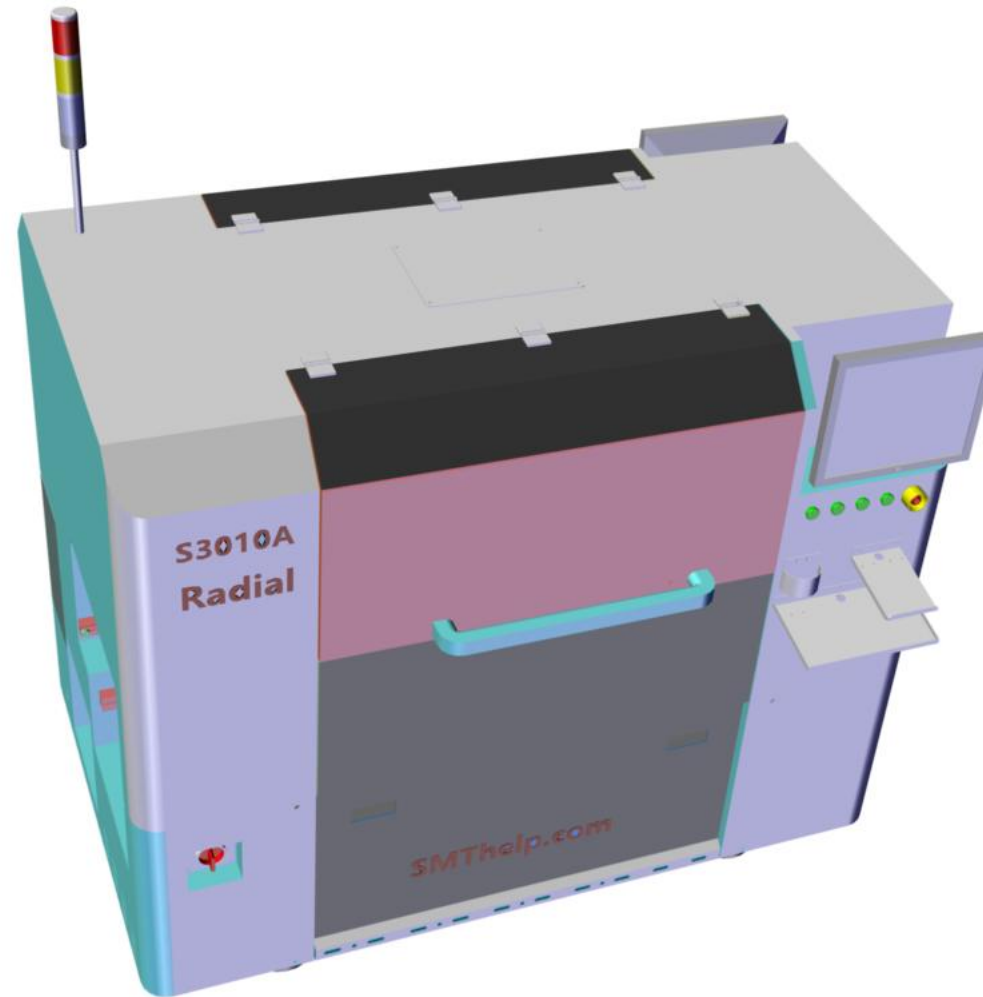


info@smthelp.com

WWW.SMTHELP.COM

We design and manufacture automatic machine for the PCBA/SMT and Thru-hole industries in Shenzhen China.

We help companies looking for low-cost equipment with smart, ROI-driven assembly equipment solutions. Welcome to contact us for more 3D machine models.



- **Worldwide Support**
- **Free Installation/ Training**
- **1 day lead-time (spare parts)**
- **1 Month customize solution**



WELCOME INQUIRY

Please visit

www.smthelp.com

Find us more

<https://www.facebook.com/autoinsertion>

Know more our team

<https://cn.linkedin.com/in/smtsupplier>

Welcome to our factory in Shenzhen China

See more machine working video, please Youtube

Auto Insertion

Google

Auto+insertion, to get more information

Looking forward to your email

info@smthelp.com